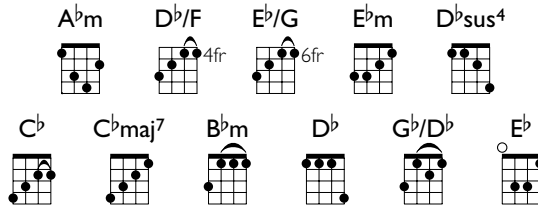


# BABOOSHKA

Words and Music by Kate Bush



♩ = 109 **Swing feel**

**Intro**  $\text{II} \frac{4}{4}$  *Play section x4*

**Verse I**

E♭m | | D♭sus4 | | C♭ | | E♭/G | | *Strumming cont. sim.*

She wanted to test her husband, she knew exactly what to do, a

| C♭maj7 | B♭m | | A♭m | D♭/F | | E♭/G | |

pseudonym to fool him. She couldn't have made a worse move.

| E♭m | | | D♭sus4 | C♭ | | | E♭/G | |

She sent him scented letters and he received them with a strange delight,

| C♭maj7 | B♭m | | A♭m | D♭/F | | E♭/G | |

Just like his wife, but how she was before the tears,

| A♭m | D♭/F | | E♭/G | | | A♭m | D♭/F | |

And how she was before the years flew by, and how she was when she was

A♭m | | | B♭m | C♭ | | | D♭ | | ||

beau - ti - ful. She signed the letter,

**Chorus I**

E♭m | | G♭/D♭ | | *Strumming cont. sim.* | A♭m | E♭/G | | A♭m | |

"All\_\_ yours, Babooshka, Babooshka, Babooshka ya ya!

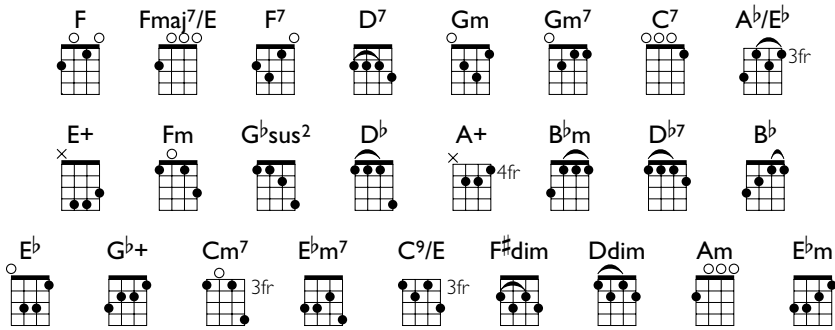
| E♭m | G♭/D♭ | | A♭m | E♭/G | | | |

All\_\_ yours, Babooshka, Babooshka, Babooshka ya ya."

E♭/G | | | 3 | | A♭m | D♭/F | | E♭/G | | | 3 | ||

# LIFE ON MARS?

Words and Music by David Bowie



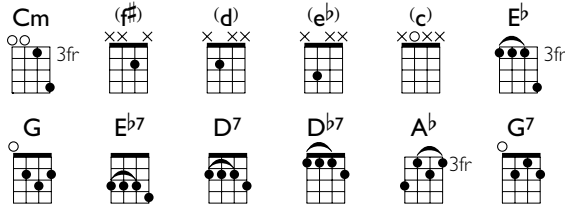
♩ = 63

## Verse I

## Chorus I

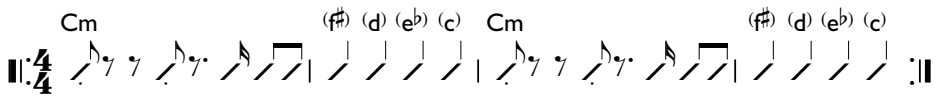
# TOXIC

Words and Music by Cathy Dennis, Christian Karlsson,  
Henrik Jonback and Pontus Winnberg



♩ = 142

## Intro



## Verse I

Cm *Strumming cont. sim.*  
 Baby can't you see I'm calling, a guy like you  
 Cm E♭ G Cm Cm  
 should wear a warning. It's dangerous, I'm falling.  
 Cm Cm Cm Cm  
 There's no escape, I can't wait. I need a hit, baby give me it.  
 E♭ G Cm (F#) (D) (E♭) (C)  
 You're dangerous, I'm loving it.

## Pre-Chorus I

Cm *Strumming cont. sim.*  
 Too high, can't come down. Losin' my head, spinnin'  
 Cm E♭ G Cm  
 'round and 'round. Do you feel me now?  
 (F#) (D) (E♭) (C) (C) (C)  
 With the

## Chorus I

Cm *Strumming cont. sim.*  
 taste of your lips I'm on a ride. You're toxic, I'm slippin' under.  
 Cm E♭7 A♭ *With the*  
 taste of the poison paradise. I'm addicted to you, don't you