

Sitting at the piano



Checklist

- Sit on the front half of the seat and lean slightly forwards.
- When your hands are on the keys, your elbows and arms should be level with the keyboard.

Check your posture

- Sit tall but relax your shoulders.
- Your upper arms hang loosely from your shoulders.
- It's easy to sit with the wrong posture and slump. Always remember to sit up tall before you begin playing.

Your hand position

Stand up straight and let your hands hang down, completely relaxed and loose at your side. Your fingers will now be in the correct, softly-curved shape.

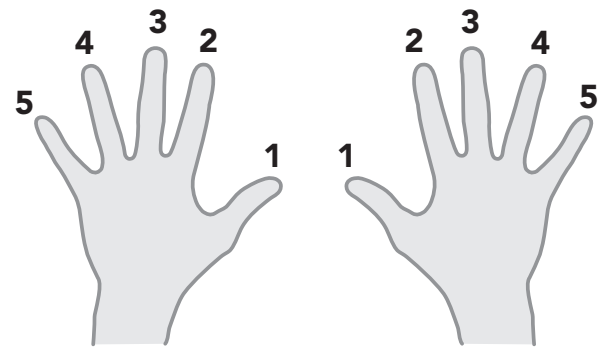
Place your hands over the piano keys and pretend you are holding a bubble: don't let it burst!

All fingers and thumbs!

In piano music your thumbs and fingers are indicated by numbers:

Top tip

Draw around both of your hands on a piece of paper and number your thumbs and fingers.



Remember your finger numbers

Place both hands on a flat surface then:

- tap your 1st fingers
- tap your 3rd fingers
- tap your 5th fingers
- tap your 2nd fingers
- tap your 4th fingers

Fact file

Legato means to play smoothly, with no gaps between the notes. Legato notes are shown by a curved line called a **slur** joining them:

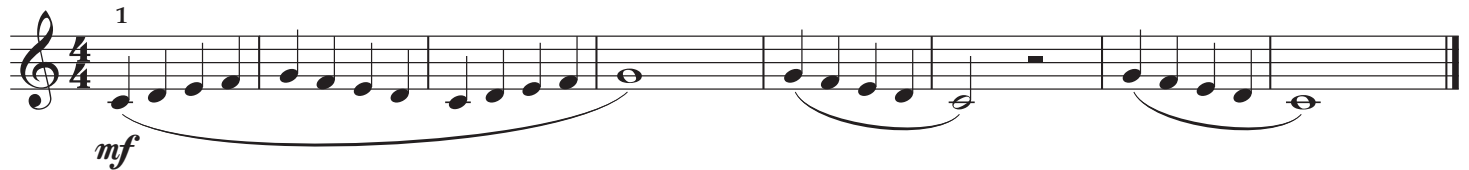


Try to play all these pieces legato.

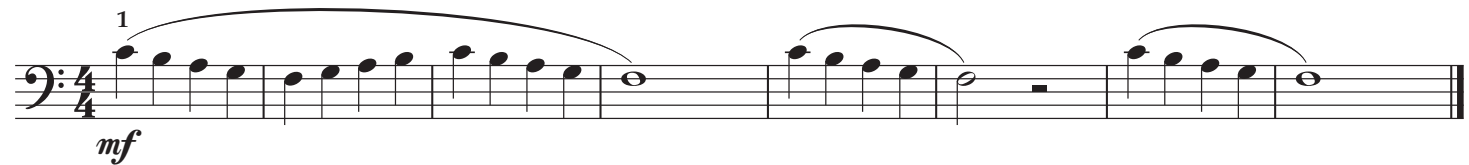
Can you sing this piece?
Singing to 'la' will help it sound legato.



Legato serenade 1

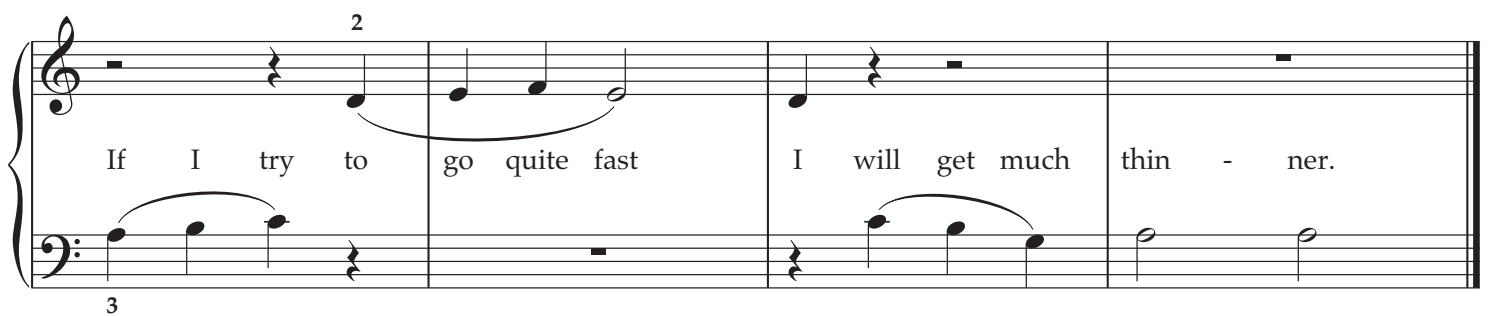


Legato serenade 2



38 Snakes and adders

Play this piece to your friends and family. Keep smiling as you perform!



Snakes and adders accompaniment



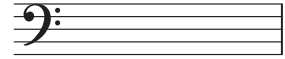


Balloons

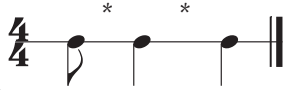
Describe **legato**:

Draw a **dotted minim**.
How many beats is it worth?

Write D as a semibreve:

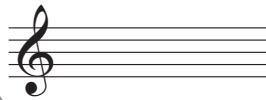


Fill in the correct rests:



What is the Italian word for **quite quickly**?

Spell C A G E in quavers:



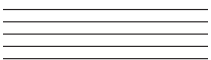
This is called a _____?



Draw a **flat sign**:

Draw a **dotted crotchet**.
How many beats is it worth?

Draw a **bass clef**:



Spell F A C E as crotchets:

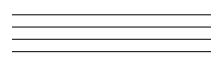


Draw a **sharp sign**:

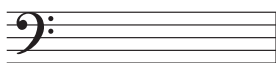
Fill in the correct rests:



Draw a **treble clef**:



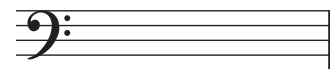
Spell B A G as minims:



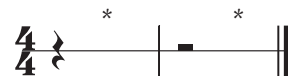
Add a **sharp sign** in front of the F:



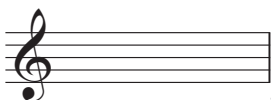
Spell C A B B A G E:



Fill in the two correct note values:



Write C above middle C as a crotchet:



Fill in the correct note values to complete the bar:

