

## PRE-TEST

1. Do these melodies move UP, DOWN, or stay the SAME?  
Write UP, DOWN, or SAME.

Melody 1 \_\_\_\_\_ Melody 2 \_\_\_\_\_ Melody 3 \_\_\_\_\_ Melody 4 \_\_\_\_\_

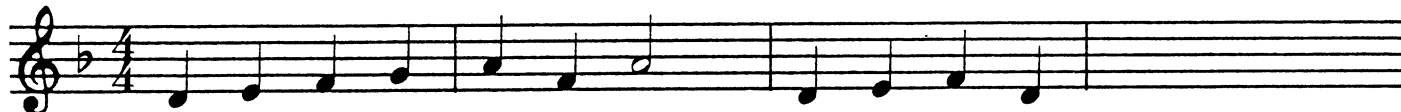
2. Are the two tones you hear a STEP or SKIP apart?  
Write STEP or SKIP.

Pair 1 \_\_\_\_\_ Pair 2 \_\_\_\_\_ Pair 3 \_\_\_\_\_ Pair 4 \_\_\_\_\_

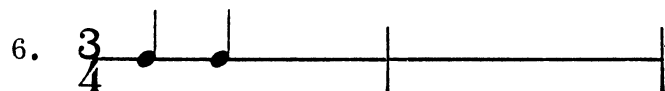
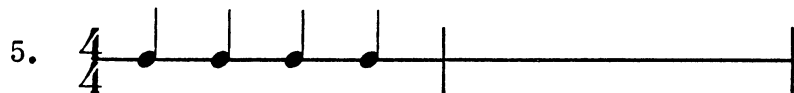
3. Write the last note of this melody.



4. Write the last note of this melody.



Listen. Complete these rhythm patterns.



7. Write the number names under these intervals.



Write the missing notes of these melodies.

10

11

12

You may check your answers.

13

14

15

You may check your answers.

## POST TEST

1. Write the number names under these intervals.

A musical staff in treble clef with a key signature of one sharp (F#). The staff contains eight intervals, each marked with a horizontal line below the staff for labeling. The intervals are: a whole note (C4 to C5), a half note (C4 to E4), a quarter note (C4 to D4), a quarter note (C4 to E4), a quarter note (C4 to F#4), a quarter note (C4 to G4), a quarter note (C4 to A4), and a quarter note (C4 to B4).

2. Write the last note of this melody.

A musical staff in treble clef with a 3/4 time signature. The melody consists of the following notes: C4 (quarter), D4 (quarter), E4 (quarter), F#4 (quarter), G4 (quarter), A4 (quarter), B4 (quarter), and C5 (quarter).

3. Write the missing notes of this rhythm pattern.

A musical staff in treble clef with a 4/4 time signature. The rhythm pattern consists of: a quarter note (C4), a quarter note (D4), a quarter note (E4), a quarter note (F#4), a quarter rest, a quarter note (G4), a quarter note (A4), and a quarter note (B4).

4. Write the last two notes of this melody.

A musical staff in treble clef with a key signature of one sharp (F#) and a 4/4 time signature. The melody consists of the following notes: C4 (quarter), D4 (quarter), E4 (quarter), F#4 (quarter), G4 (quarter), A4 (quarter), B4 (quarter), C5 (quarter), B4 (quarter), A4 (quarter), G4 (quarter), F#4 (quarter), E4 (quarter), D4 (quarter), and C4 (quarter).

5. You will hear this melody played correctly.  
Then you will hear it with two wrong notes.  
Circle the two notes that sound wrong.

*Green Gravel*

A musical staff in treble clef with a 3/4 time signature. The melody consists of the following notes: C4 (quarter), D4 (quarter), E4 (quarter), F#4 (quarter), G4 (quarter), A4 (quarter), B4 (quarter), C5 (quarter), B4 (quarter), A4 (quarter), G4 (quarter), F#4 (quarter), E4 (quarter), D4 (quarter), and C4 (quarter).

6. Write the missing notes in this melody.

A musical staff in treble clef with a key signature of one sharp (F#) and a 4/4 time signature. The melody consists of the following notes: C4 (quarter), D4 (quarter), E4 (quarter), F#4 (quarter), G4 (quarter), A4 (quarter), B4 (quarter), C5 (quarter), B4 (quarter), A4 (quarter), G4 (quarter), F#4 (quarter), E4 (quarter), D4 (quarter), and C4 (quarter).

You may check your answers.