

Contents

Selecting Your Ukulele	3	Introducing the Quarter Note	27
Parts of the Ukulele	4	<i>Clap and Count Out Loud</i>	
Caring for Your Ukulele		Notes on the First String: Introducing A	28
Tuning Your Ukulele	5	<i>Abby, the Armadillo</i>	
How to Hold Your Ukulele	6	The Note A with Chords	29
Strumming the Strings	7	<i>Note and Strum</i>	
Strumming with a Pick		Notes on the First String: Introducing B	30
Strumming with Your Fingers		<i>Up-Down-Up</i>	
<i>Time to Strum!</i>		The Notes A and B with Chords	31
Strumming Notation	8	Notes on the First String: Introducing C	32
Beats		<i>The Mountain Climber</i>	
Introducing the Quarter-Note Slash		The Notes A, B, and C with Chords	33
The Staff and Treble Clef		<i>Brave in the Cave</i>	
Bar Lines, Measures, and Time Signatures		Notes on the Second String: Introducing E . . .	34
<i>More Time to Strum</i>		<i>Two Open Strings</i>	
Using Your Left Hand	9	<i>Two-String Melody</i>	
Hand Position		<i>Jumping Around</i>	35
Placing a Finger on a String		Notes on the Second String: Introducing F . . .	36
How to Read Chord Diagrams		<i>Ping Pong Song</i>	
The C Chord	10	<i>Soccer Game</i>	
<i>My First Chord</i>		The Half Rest	37
The Quarter Rest	11	<i>When I Feel Best</i>	
<i>Three Blind Mice</i>		Notes on the Second String: Introducing G . .	38
The C⁷ Chord	12	<i>A-Choo!</i>	
<i>My Second Chord</i>		The Half Note	39
<i>Troubadour Song</i>	13	<i>Hot Cross Buns</i>	
The F Chord	14	Notes on the Third String: Introducing C	40
<i>My Third Chord</i>		<i>Three Open Strings</i>	
Three Chords in One Song	15	<i>Little Steps and Big leaps</i>	
<i>Rain Comes Down</i>		<i>The Old Grey Mare</i>	41
<i>Skip to My Lou</i>	16	Notes on the Third String: Introducing D	42
<i>London Bridge</i>	17	Introducing the Whole Note	
The Repeat Sign	18	<i>D Is Easy!</i>	
<i>Merrily We Roll Along</i>		<i>Taking a Walk</i>	
<i>Love Somebody</i>	19	<i>Ode to Joy</i>	43
The G⁷ Chord	20	<i>Jingle Bells</i>	44
<i>My Fourth Chord</i>		<i>Mary Had a Little Lamb</i>	45
Using G⁷ with Other Chords	21	<i>Over the Rainbow</i>	46
<i>A-Tisket, A-Tasket</i>	22	Music Matching Games	47
<i>Aloha 'Oe (Farewell to Thee)</i>	23	Certificate of Promotion	48
<i>When the Saints Go Marching In</i>	24		
<i>Yankee Doodle</i>	25		
Getting Acquainted with Music Notation	26		
Notes			
The Staff			
The Music Alphabet			
Clefs			

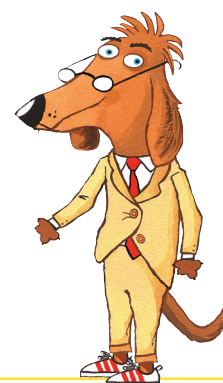
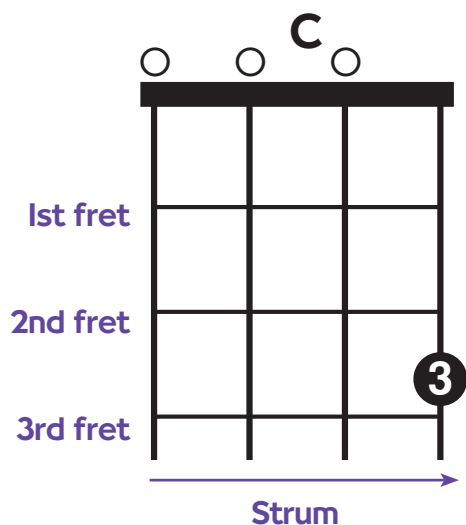
The C Chord

Hear this chord!



Track 5

Use finger 3 to press the 1st string at the 3rd fret. If you have any trouble holding finger 3 down to play the C chord, place fingers 1 and 2 on the 1st and 2nd frets behind finger 3 until you are able to play with just finger 3.



Strumming

Strum the four-string C chord on each quarter-note slash \downarrow . Make sure your strums are even. Count aloud as you play:

1-2-3-4 | 1-2-3-4.

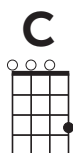
Listen to the recording or watch the video to hear how it should sound!

My First Chord



Track 6

Remember: This means there are 4 beats in each measure.

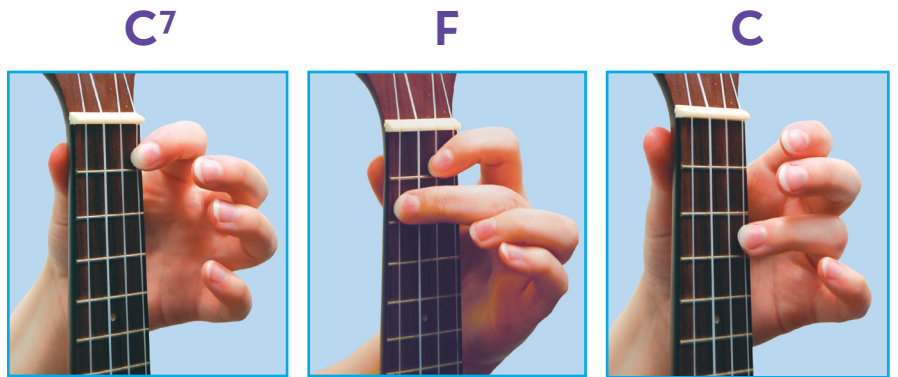


This double bar line tells us the music is finished.

Skip to My Lou



Practice Tip
 To change quickly from C⁷ to F in the last two measures, move your 1st finger to the 2nd string—that's not very far—and then put your 2nd finger on the 4th string.



Track 15

F **C**

4/4

Skip, ___ skip, ___ skip to my Lou! (rest) Skip, ___ skip, ___ skip to my Lou! (rest)

F **C⁷** **F**

Skip, ___ skip, ___ skip to my Lou! (rest) Skip to my Lou my dar - ling! (rest)

Remember to move your 1st finger to the 2nd string and then put your 2nd finger on the 4th string to play the F chord on the next beat.

Notes on the Second String

Introducing F

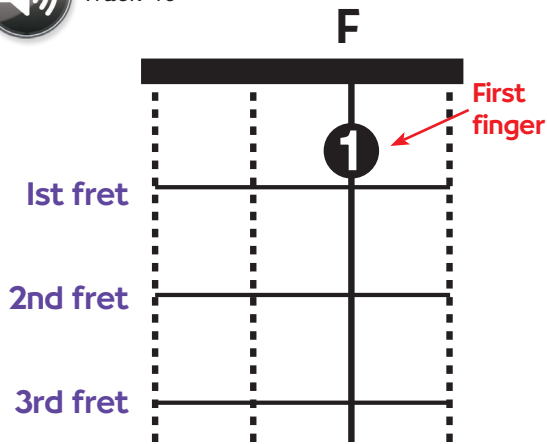
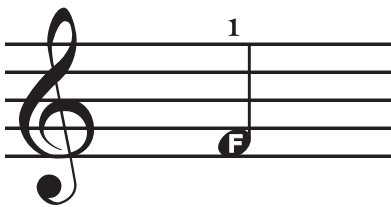


Hear this note!



Track 46

A note on the 1st space of the staff is called F. Use finger 1 to press the 2nd string at the 1st fret. Pick only the 2nd string.



Track 47

Ping Pong Song

F Warm-Up



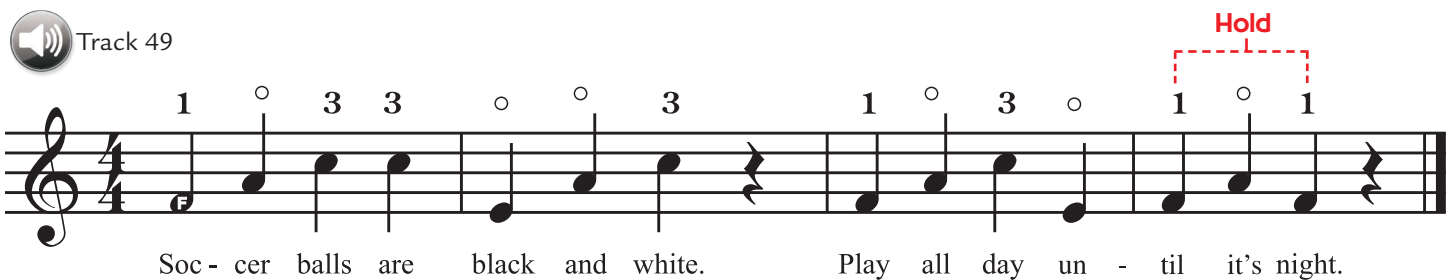
Track 48



Soccer Game



Track 49



Jingle Bells



Track 68

Musical notation for the first line of the song. The staff is in 4/4 time. The melody consists of quarter notes: C4, D4, E4, F4, G4, A4, B4, A4, G4, F4, E4, D4. Above the staff are fingerings: an open circle above C4, and numbers 3, 2, and an open circle above the notes G4, F4, and E4 respectively. A guitar chord diagram for C major is shown to the right of the staff.

Jin - gle bells, jin - gle bells jin - gle all the way. _____

Musical notation for the second line of the song. The staff is in 4/4 time. The melody consists of quarter notes: C4, D4, E4, F4, G4, A4, B4, A4, G4, F4, E4, D4. Above the staff are fingerings: a '1' above C4, an open circle above D4, a '2' above E4, and another '2' above F4. A guitar chord diagram for G7 is shown to the right of the staff.

Oh what fun it is to ride a one - horse o - pen sleigh. _____

Musical notation for the third line of the song. The staff is in 4/4 time. The melody consists of quarter notes: C4, D4, E4, F4, G4, A4, B4, A4, G4, F4, E4, D4. Above the staff are fingerings: an open circle above C4, and numbers 3, 2, and an open circle above the notes G4, F4, and E4 respectively. A guitar chord diagram for C major is shown to the right of the staff.

Jin - gle bells, jin - gle bells jin - gle all the way. _____

Musical notation for the fourth line of the song. The staff is in 4/4 time. The melody consists of quarter notes: C4, D4, E4, F4, G4, A4, B4, A4, G4, F4, E4, D4. Above the staff are fingerings: a '1' above C4, an open circle above D4, a '3' above E4, a '1' above F4, and a '2' above G4. A guitar chord diagram for C major is shown to the right of the staff.

Oh what fun it is to ride a one - horse o - pen sleigh. _____