

2 SOMEBODY'S TALKIN' 'BOUT JESUS

for S.A.T.B. voices, solo(s), accompanied*

Traditional Spiritual

Arranged by

BOB KROGSTAD (ASCAP)

Spirited (♩ = ca. 136)

TENOR
BASS



Ev - er - y - where_ I go, ___

3



ev - er - y - where_ I go, ___ my Lord; ___ ev - er - y - where go, _

6



___ somebod - y's talk - in' 'bout Je - sus. ___

N.C.

mf

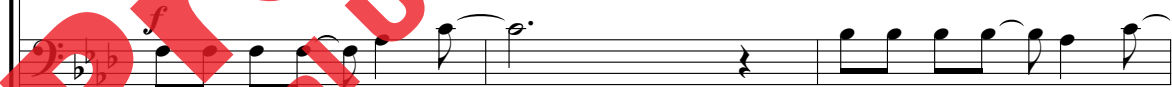
9

SOPRANO / ALTO

mf

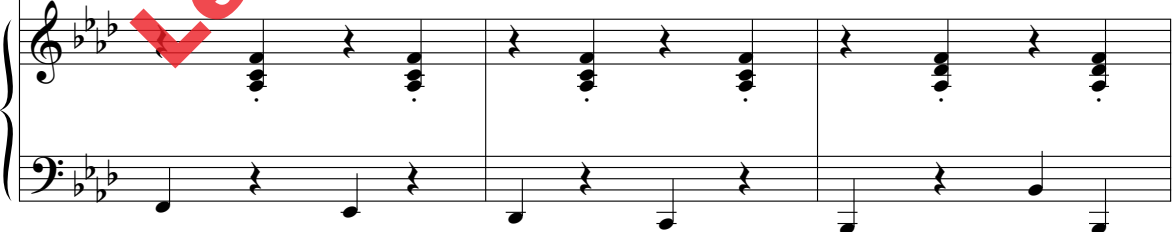


Ooo ___ Ev - 'ry-where I go, ___



Ev - er - y - where_ I go, ___ ev - er - y - where_ I go, _

Fm Fm/E♭ Fm/D♭ Fm/C B♭m7



* To purchase a full-length performance recording (42910) of this piece, go to alfred.com/downloads.

© 2014 ALFRED MUSIC

All Rights Reserved. Printed in USA.

THE CCLI LICENSE DOES NOT GRANT PERMISSION TO PHOTOCOPY THIS MUSIC.

42910

12

ev-'ry-where I go, — ev - 'ry-where I go, —

— my Lord; — ev - er - y - where I go, —

Fm Eb2/C Fm Bbm9

15 SOLO 1* *mf* 17

They turned a - way Ma - ry and

some - bod - y's talk - in' about Je - sus. —

mf

15 Fm N.C. Fm Cm7 Fm Fm/C Fm 17

* There are three solos throughout. It is suggested that each be different: perhaps a Baritone (Solo 1), an Alto or Soprano (Solo 2), and a Tenor (Solo 3). Of course, all the solos may be sung by one person with a suitable range. 42910

18

Jo-seph from the inn, —

Some-bod - y's talk - in' 'bout Je - sus. —

18 Bb_m F_m N.C. F_m $Cm7$ F_m F_m/C

21

Born in a sta-ble in Beth-le - hem... (end solo)

Some-bod - y's talk - in' 'bout

21 F_m Bb_m F_m N.C. F_m

25

24

f

Je - sus. — Ev - er - y - where. I go, —

Cm7 Fm Cm7 Fm Fm/E \flat Fm/D \flat Fm/C

f

27

ev - er - y - where. I go, — my Lord; — ev - er - y - where. I go, —

B \flat m7 Fm E \flat /C Fm

30

mf

some - bod - y's talk - in' 'bout Je - sus. —

mf

B \flat m9 Fm N.C. Fm Cm7 Fm Fm/C

mf

Preview Only
Legal Use Requires Purchase

41

39

mf

Some-bod - y's talk - in' 'bout Je - sus. —

Ooo —

Ev - er - y - where I go, —

Fm N.C.

Fm Cm7

Fm Cm7

Fm

Fm/Eb

f

42

— Ev - 'ry-where I go, —

ev - ry-where I go; —

— ev - er - y - where I go, — my Lord; —

Fm/Db

Fm/C

Bbm7

Fm

Eb2/C

45

mf

— ev - 'ry-where I go, — some-bod - y's talk - in' 'bout

mf

ev - er - y - where I go, —

some-bod - y's talk - in' 'bout

Fm

Bbm9

Fm

N.C.

Fm

mf

48 SOLO 3 49 *f*

Hark! The her - ald an - gels sing, —

(mf)

Je - sus. — Ev - 'ry-where, ev - 'ry-where,

(mf)

Je - sus. —

49

48 Cm7 Fm Bb7/C Fm *f* Fm7 Bb7 B7m7

51

“Glo - ry to — the

f

some-bod - y's talk-in' bout Je - sus. — Ev - er - y-where, —

f

51 Fm N.C. Fm Cm7 Fm Eb/C Fm



54

new - born King!'' - Some-bod-y's talk - in' 'bout Je - sus. -

ev - er - y - where, - some-bod-y's talk - in' 'bout Je - sus. -

54

B \flat m Fm N.C. Fm Cm7 Fm Cm7

57

With gusto!

Ev-'ry-where I go, -

With gusto!

Ev - er - y - where I go, - ev - er - y - where I go, -

57

Fm Fm/E \flat Fm/D \flat Fm/C B \flat m7

With gusto!

60

ev - 'ry-where_ I go, _____

_____ my Lord; _____ ev - er - y - where_ I go, _____

60 Fm Eb2/C Fm Bbm9

63 (end solo)

some-bod - y's talk - in 'bout Je - sus. _____

some-bod - y's talk - in 'bout Je - sus. _____ Je - sus, Je - sus,

63 Fm N.C. Cm7 Fm

p *mp*

p *mp*

66 *mf* *f* [67]
 Je - sus, Je - sus! Ev - er - y - where_ I go, —

mf *f*
 Ev - er - y - where, — ev - er - y - where, —

D7 Gm D+ Gm7 Gm6/D Gm6

69
 ev - er - y - where_ I go, — my Lord; — ev - 'ry - where I go, —
 ev - er - y - where, — ev - er - y - where, — ev - 'ry - where I go, —

Cm7 Gm D7sus Gm N.C. Gm7 C9

72 *sub. mp cresc.*
 some - bod - y, some - bod - y,
sub. mp cresc.

Gm/D Cm6/D
sub. mp cresc.

75

some-bod - y's talk - in' 'bout Je - sus! Je - sus!

78

sus! Je - sus!

Gm N.C. Gm

Somebody's Talkin' 'Bout Jesus – This is a relatively unknown spiritual that is finally getting the attention it justly deserves. The men of the choir open the arrangement *a cappella*, and should sing it with a robust, full tone. Note the occasional drop to quieter dynamics, but keep the energy flowing throughout. While it is perfectly fine to use three soloists for the brief solos, one voice could sing all three, providing they have the necessary range (which is not that demanding). Above all, enjoy the enthusiastic message of this great spiritual, and sing it with fervor!

Bob Krogstad is a noted arranger, composer and conductor who has written hundreds of musical arrangements and compositions for choirs, orchestras and soloists. In addition to his published music, he has also served as the symphony conductor for the late jazz-great, Mel Tormé; inspirational favorite, Sandi Patty; and musical director for the “unforgettable” Natalie Cole. His music covers a wide range of sacred and secular styles, and we are delighted to have him in the Alfred Sacred catalog.