

Contents

Choosing a Ukulele to Use with This Book . . .	3	Pickup Measures	21
Book 1 Review	4	<i>A-Tisket, A-Tasket</i>	21
<i>All the Notes I Know So Far</i>	6	<i>Tom Dooley</i>	22
<i>This Is an Octave</i>	6	Eighth Notes	23
Largo	7	<i>Jammin' with Eighth Notes</i>	23
<i>Largo</i>	7	<i>Go Tell Aunt Rhody</i>	24
Dotted Half Notes & $\frac{3}{4}$ Time	8	<i>Love Somebody (Extended Version)</i>	25
<i>Three Is for Me!</i>	8	<i>Clementine</i>	26
<i>The Farmer in the Dell</i>	9	Dotted Quarter Notes	28
<i>Beautiful Brown Eyes</i>	10	<i>Counting Dotted Quarter Notes</i>	28
Introducing Common Time	11	<i>Cockles and Mussels</i>	28
<i>Old MacDonald Had a Farm</i>	11	Dynamics	30
Introducing B-Flat	12	<i>Echo Rock</i>	30
<i>Aura Lee</i>	12	<i>The Streets of Laredo</i>	31
<i>Three-String Boogie</i>	13	The Down-and-Up-Stroke	32
Tempo Signs	14	The Fermata	33
<i>Three-Tempo Rock</i>	14	<i>Michael, Row the Boat Ashore</i>	33
<i>Rockin' Uke</i>	15	Introducing F-Sharp	34
<i>Good Night Ladies</i>	16	<i>Little Brown Jug</i>	34
<i>Blues in C</i>	17	The G Chord	35
Ties	18	The D7 Chord	35
<i>Down in the Valley</i>	18	<i>Over the Rainbow (Extended Version)</i>	36
Key Signatures	20	Music Matching Games	38
<i>Ode to Joy (Extended Version)</i>	20	Ukulele Fingerboard Chart	39
		Certificate of Completion	40

Tuning Your Ukulele Tracks 1 & 2

The CD contains all the warm-ups and tunes in Book 2, so you may listen and play along with them. You need to be sure your ukulele is in tune every time you start to play, especially when you want to play along with the CD. Listen carefully to the instructions on Track 1, then use Track 2 to get your ukulele in tune.

Introducing B-flat



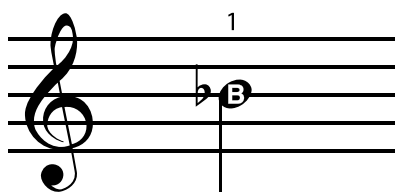
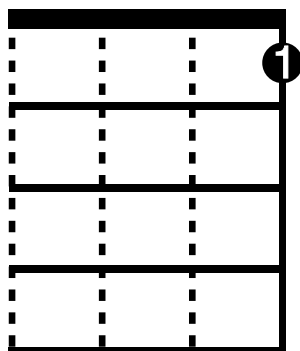
Hear this note!



Track 11

A flat \flat lowers a note a *half step* (the distance from one fret to another is called a half step). $B\flat$ is played one fret lower than the note B. When a flat note appears in a measure, it is still flat until the end of that measure.

1st FRET

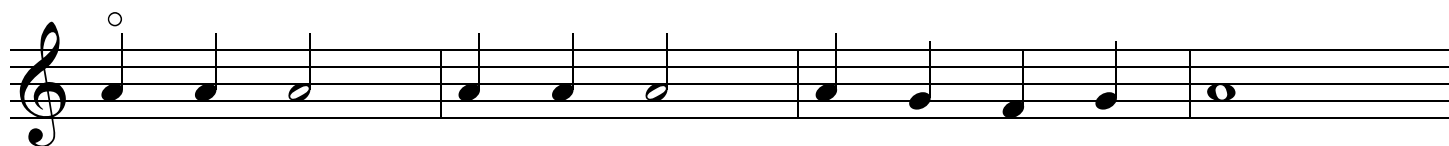
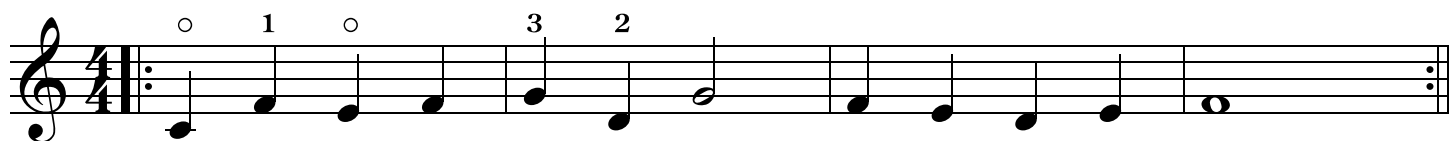


Aura Lee



Track 12

Elvis Presley recorded this folk song as a pop ballad called "Love Me Tender."



Ties

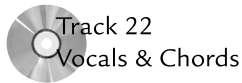


A *tie* is a curved line that connects two of the same note. When two notes are tied, don't play the second note, but keep the first note playing until the second note is done. You are really adding the two notes together.

Clap and Count Out Loud



Down in the Valley



Moderately